

Jeremy & Jodie Toews
Connor, Joel & ...

VIA AIR MAIL
PAR AVION
SURAT UDARA



Kalimantan



News Brief

- The third installment of the Toews family expansion is due in early February!
- We recently attended training on how to build relationships with Muslims.
- We've begun the Indonesian visa application process!
- We invite you to join our prayer support team. Send us an email at jtoews@maf.org to tell us you'd like to receive our brief prayer updates.
- Our monthly ministry support is at 92%. We still need \$620 a month to be fully funded.



Preparing to serve in
Kalimantan, Indonesia with



Mission Aviation Fellowship

"The thief comes only to steal and kill and destroy; I have come that they may have life and have it to the full." - John 10:10

We're thrilled to announce that we will be traveling to Indonesia next year as a family of five! Kiddo #3 should arrive around February 8th, and we plan to depart as quickly thereafter as the wheels of bureaucracy can generate a passport and visa for the littlest Toews.

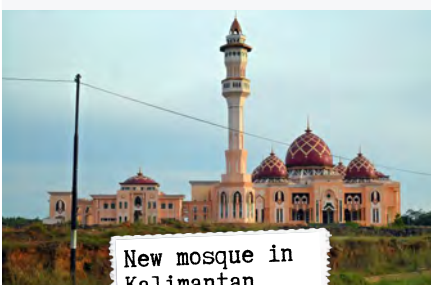


The last couple of months have been packed with travel, inviting partnership with churches and individuals as we share about our ministry as a pilot/mechanic family in Kalimantan, Indonesia. Because Indonesia is the largest Muslim country in the world, we also attended a week of training on building relationships with Muslims.

As I write this, 1.6 billion Muslims around the world are observing the first day of the Islamic month of Ramadan. Devout Muslims observe this month as a time of strict fasting and prayer, seeking an encounter with God.

Jodie and I invite you to join us and millions of Christians around the world in prayer for the Muslim world during the coming 30 days of Ramadan. Today, more Muslims are recognizing the Light than at any other time in history. As this past year has shown, the need has never been greater to be united in intentional prayer for the Muslim world. Visit www.30daysprayer.com for specific ways to pray strategically through each day of Ramadan.

*In His service,
The Toews Family*



New mosque in
Kalimantan



MAF aircraft in
Kalimantan



Presenting our
ministry at a
church in June



92%

Monthly financial support commitments have reached 92% of the amount we need for ongoing ministry support before we can leave. We're currently \$620 a month short.



Timeline to Indonesia

- Complete!**  **Application, Medical Screening and Technical Evaluation**
- Complete!**  **Candidacy, Acceptance, and Field Assignment**
- Complete!**  **Crescent Project: Training for work among Muslims**
- Present—**
July 2015  **Ministry Partnership: Meet financial support goals**
- Aug.—**
Oct. 2015  **Technical Standardization & Orientation Training**
- Nov. 2015—**
Feb. 2016  **Pack the crate, have a baby, obtain visas, say good-byes (not necessarily in that order)**
- Early 2016**
(contingent on previous step)  **Move to Indonesia, begin 11 months of language school**

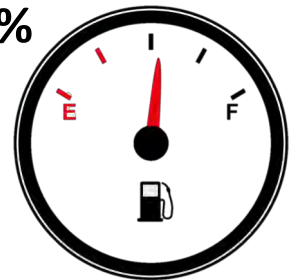


The Boys

We're so thankful that the boys have done SO well throughout the past few months of traveling, late nights, and constant transition. Connor is 2½ and loves sprinklers, lights, propellers and singing. His favorite songs are *Count Your Many Blessings*, *Great is Thy Faithfulness*, and *Old McDonald had a Farm*. Joel is almost 10 months old and is pretty much the happiest, most easy-going baby we could hope for. His favorite activities include reaching for coffee mugs and watching whatever his older brother is doing.

Our one-time, outgoing fund is at about 53%. This fund covers things like final flight training, language school, and the expenses incurred during the moving process. We still need about \$17,000.

53%



Praise God...

- For baby #3 on the way! So excited to become a family of five!
- For excellent training to equip us as salt and light among Muslim people
- For many opportunities to share the ministry of MAF and invite partnership

Thanks for praying with us...

- For health for Jodie and the baby throughout the pregnancy and wisdom as we make decisions and modify plans
- For God to continue to bring partners who will regularly pray for us and meet the remaining financial need before Aug.

Contact Info:

Email Jeremy: jtoews@maf.org

Email Jodie: jodietoews@maf.org

Phone: (509)-944-6644

Blog:

www.airmail2date.blogspot.com

Financial Support:

www.maf.org/toews

(800)-FLYS-MAF (359-7623)

Mail:

MAF | PO Box 47 | Nampa, ID 83653

"The harvest is plentiful, but the laborers are few. Therefore pray earnestly to the Lord of the harvest to send out laborers into His harvest."
Luke 10:2 (ESV)